



e - Saksham
Digital Learning Platform for MGNREGS



Implemented by
giz Deutsche Gesellschaft
für Internationale
Zusammenarbeit (GIZ) GmbH

e – Saksham **(A Digital Learning Platform for MGNREGS)**

MoRD-GIZ Project ‘Environmental Benefits through
Mahatma Gandhi NREGA’



Features of e - Saksham

- Massive Open Online Course (MOOC)
- Anybody can access the course from anywhere anytime from Computer & Mobile App
- Accessible from MGNREGA website (www.nrega.nic.in) under the tab E- Saksham
- OTP based one time registration for web portal & mobile app
- Contact section for queries / support over email

The screenshot shows the MGNREGS website interface. At the top, there is a navigation bar with the URL nrega.nic.in/netnrega/mgnrega_new/Nrega_home.aspx. Below the navigation bar, there is a banner image showing a man speaking at a podium. The main content area displays several statistics for the period 2015-16:

- 11.2 CR ACTIVE WORKERS
- 3.56 CR ASSETS CREATED TILL DATE
- 85.96 CR PERSON DAYS GENERATED
- 11.59 CR DET. TRANSACTIONS
- 3.05 CR HOUSEHOLDS BENEFITED
- 1.51 CR INDIVIDUAL CATEGORY WORKS

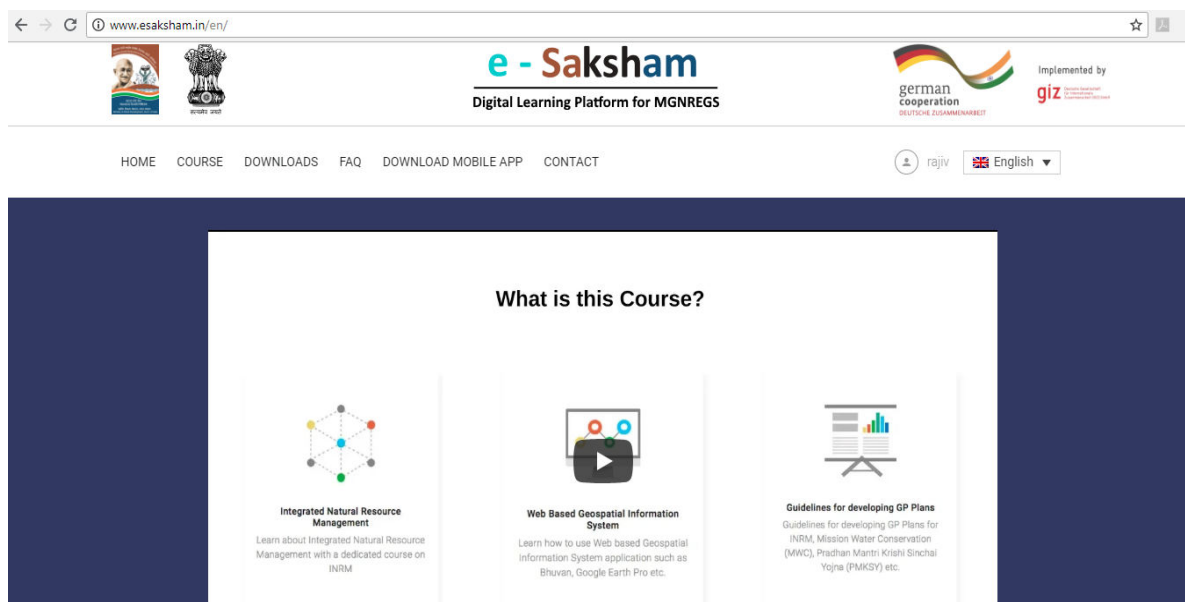
Each statistic is accompanied by a list of states: ANDHRA PRADESH, CHHATTISGARH, GUJARAT, KARNATAKA, KERALA, MADHYA PRADESH, MAHARASHTRA, MIZORAM, NAGALAND, NARAYANA, PUNJAB, RAJASTHAN, SIKKIM, TAMIL NADU, TELANGANA, TRIPURA, UTTAR PRADESH, WEST BENGAL, YODHA.

At the bottom of the page, there is a row of icons representing different services: At a Glance, Geo MGNREGA, E-Saksham (highlighted with a red arrow), MGNREGS, Library, Register for MGNREGS, and Important Documents.

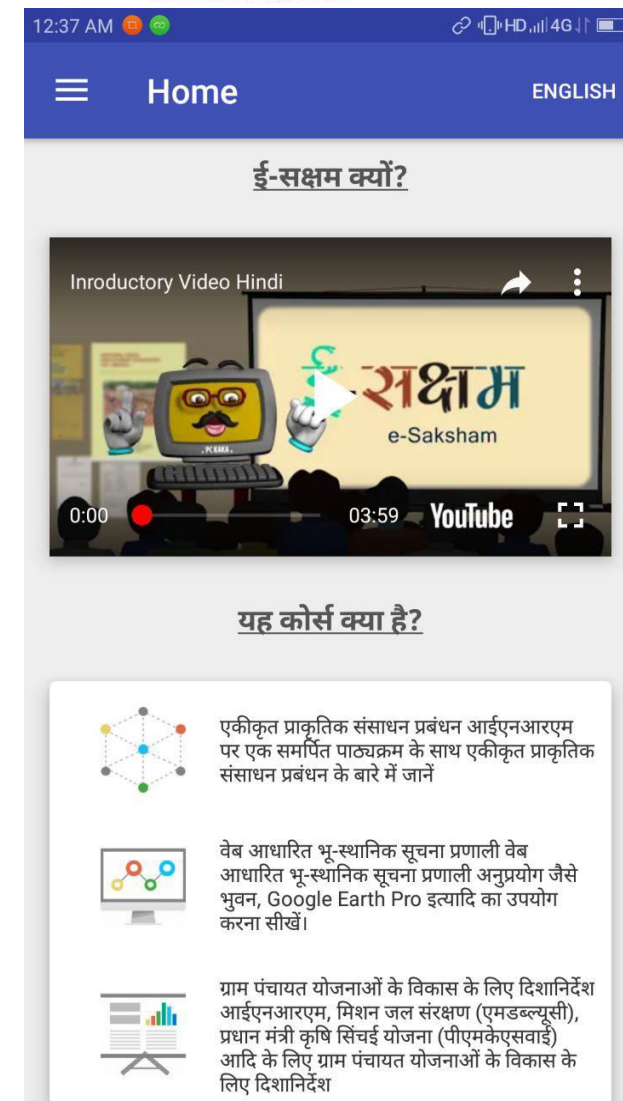


Course Modules

- 6 Modules, 17 Video Sessions in English & Hindi Languages
- Total Duration : **2.20 hours**
- **FAQ & Quiz** sections in every module
- **“Download”** Section for Sample INRM Plan, Empty Template & other useful resource material
- **“Important links”** section for further resource materials
- **“Forum”** Section for discussion among the registered members of the portal



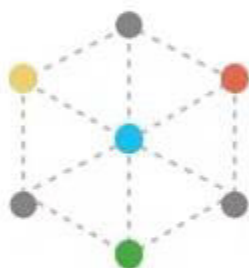
Web Portal



Mobile App



About this course



Integrated Natural Resource Management

Learn about Integrated Natural Resource Management with a dedicated course on INRM



Web Based Geospatial Information System

Learn how to use Web based Geospatial Information System application such as Bhuvan, Google Earth Pro etc.

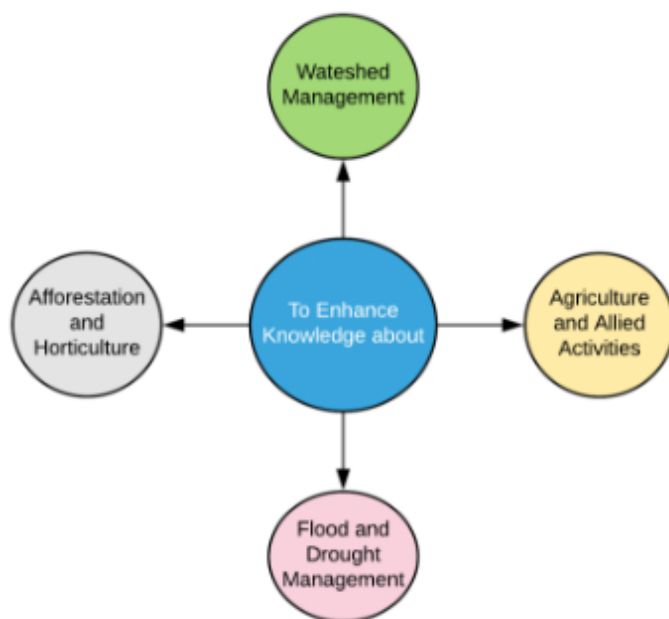


Guidelines for developing GP Plans

Guidelines for developing GP Plans for INRM, Mission Water Conservation (MWC), Pradhan Mantri Krishi Sinchai Yojna (PMKSY) etc.

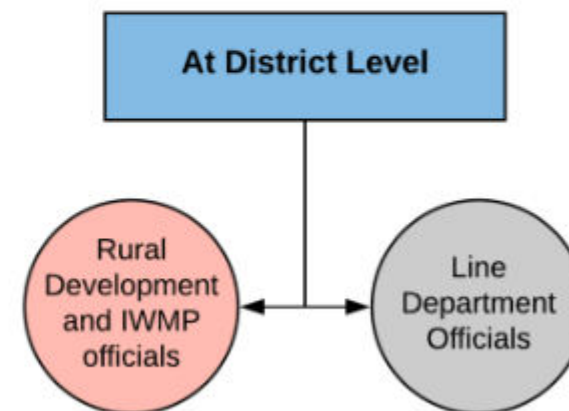
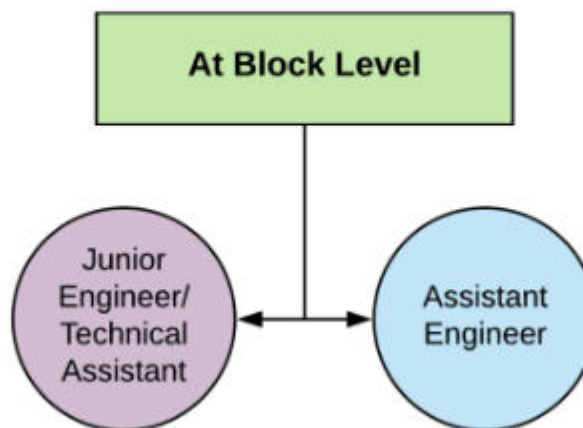
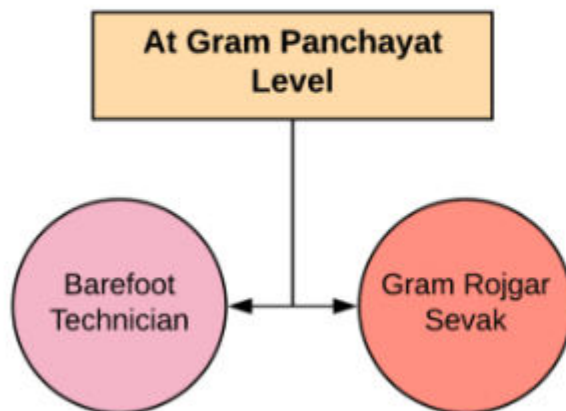


Why this course?





Who should do this course?





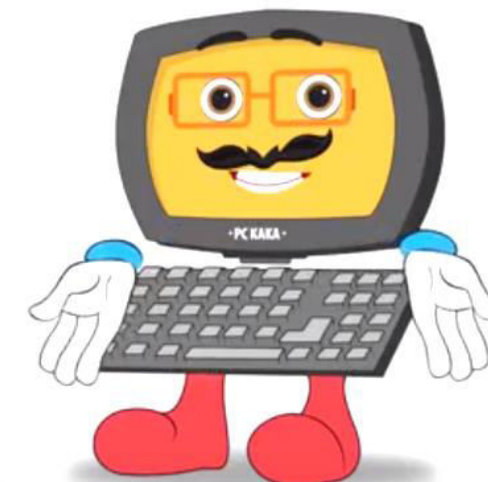
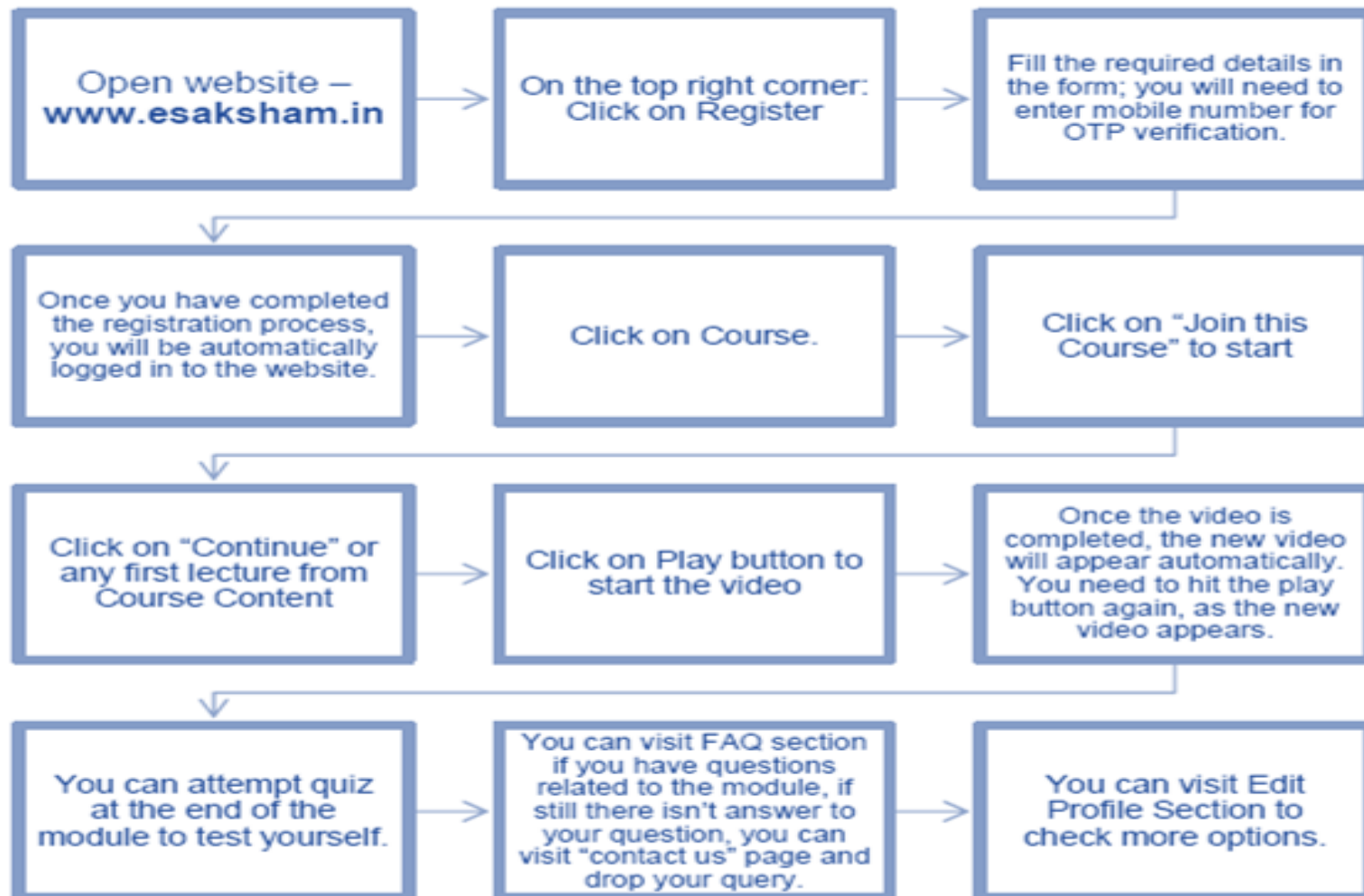
e - Saksham

Digital Learning Platform for MGNREGS



Implemented by
giz
Deutsche Gesellschaft
für Internationale
Zusammenarbeit (GIZ) GmbH

User guide



P C KAKA
Course Facilitator



6 Modules

Basics of INRM

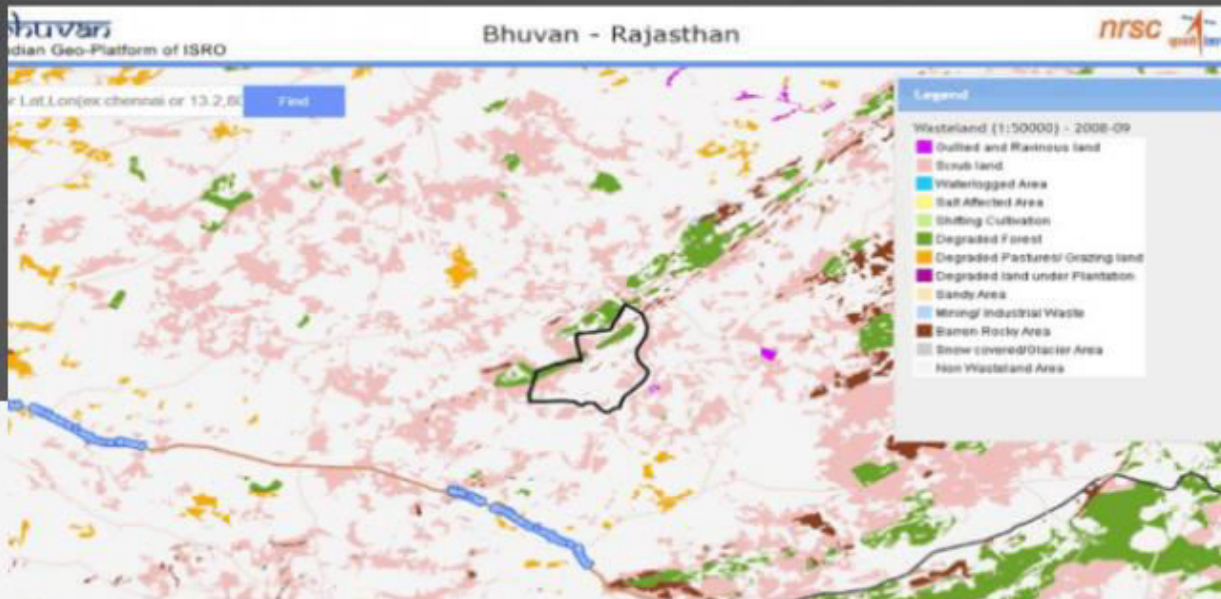
Secondary Info

RS & GIS
Outputs

Analysis : Stat &
Thematic info

INRM Plan
Development

Intro to SIS-DP



GIS based INRM Planning under MGNREGA

An online course for the technical staff of MGNREGA and Line Departments.

CONTINUE

In Progress (5 of 29 items completed)



Special Videos

Introductory

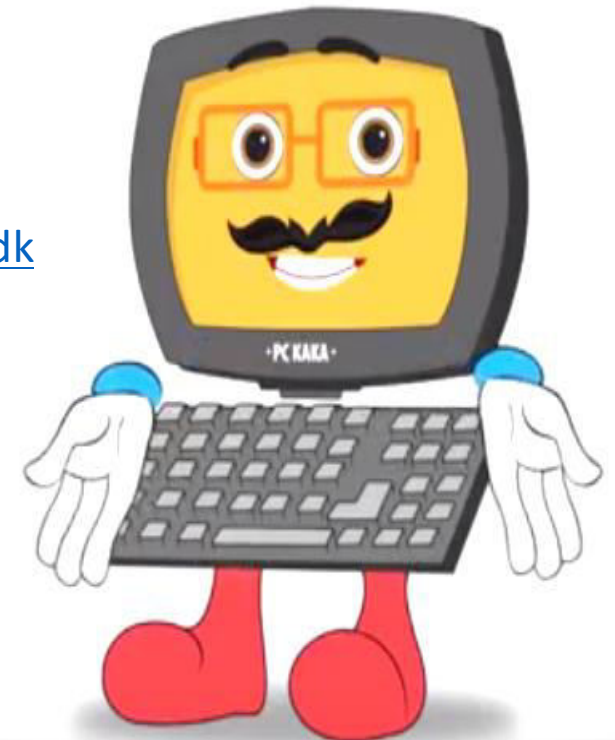


https://drive.google.com/file/d/1xIZxpVPNf834K91ondPd2_eViWCgOeD3/view?usp=drivesdk

Information



<https://drive.google.com/file/d/1G5oV552-ef3rkXZNSO2rH8cJdwRIONax/view?usp=drivesdk>





e - Saksham

Digital Learning Platform for MGNREGS



Implemented by
giz
Deutsche Gesellschaft
für Internationale
Zusammenarbeit (GIZ) GmbH

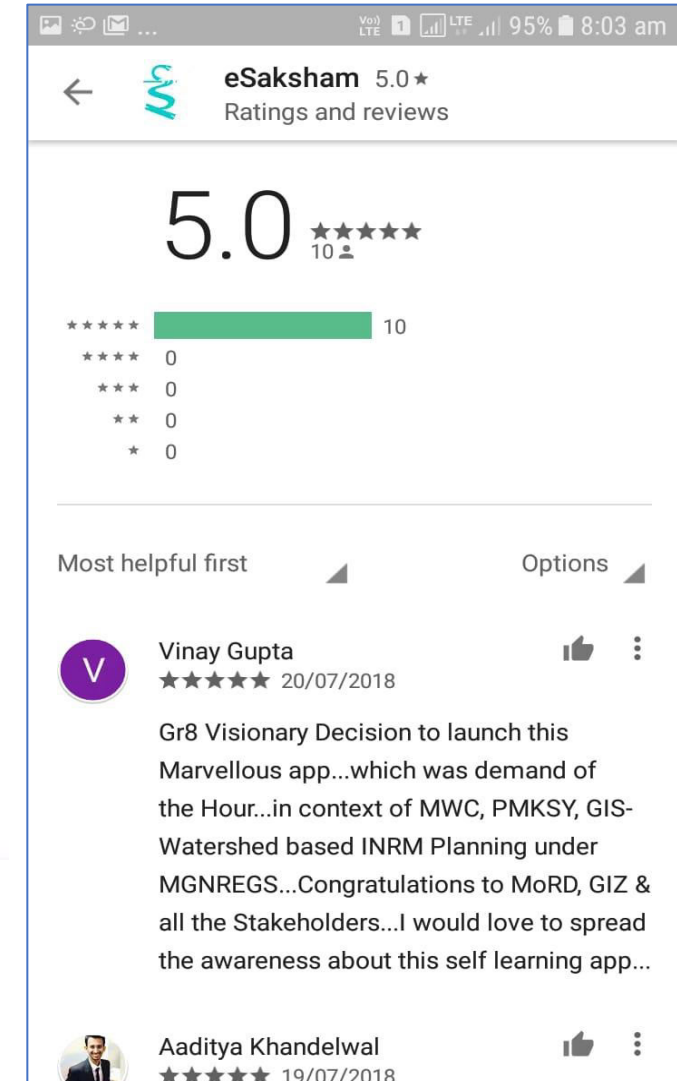
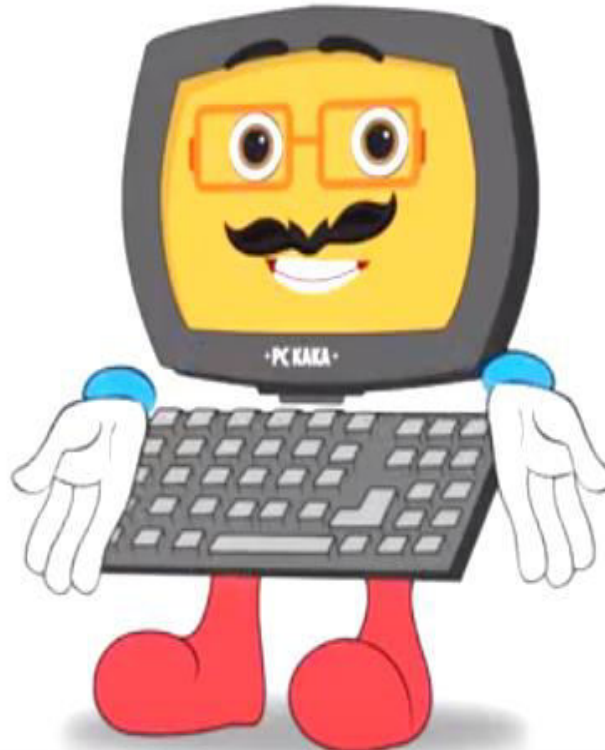
Highlights

4600 +Registered Users (so far)

4,65,000+ Page hits (so far)

4100+ Mobile App Users

Average 40- 50new registrations
everyday





e - Saksham
Digital Learning Platform for MGNREGS



Implemented by
giz
Deutsche Gesellschaft
für Internationale
Zusammenarbeit (GIZ) GmbH

For Further Queries
team@geomgnrega.in

THANK YOU

